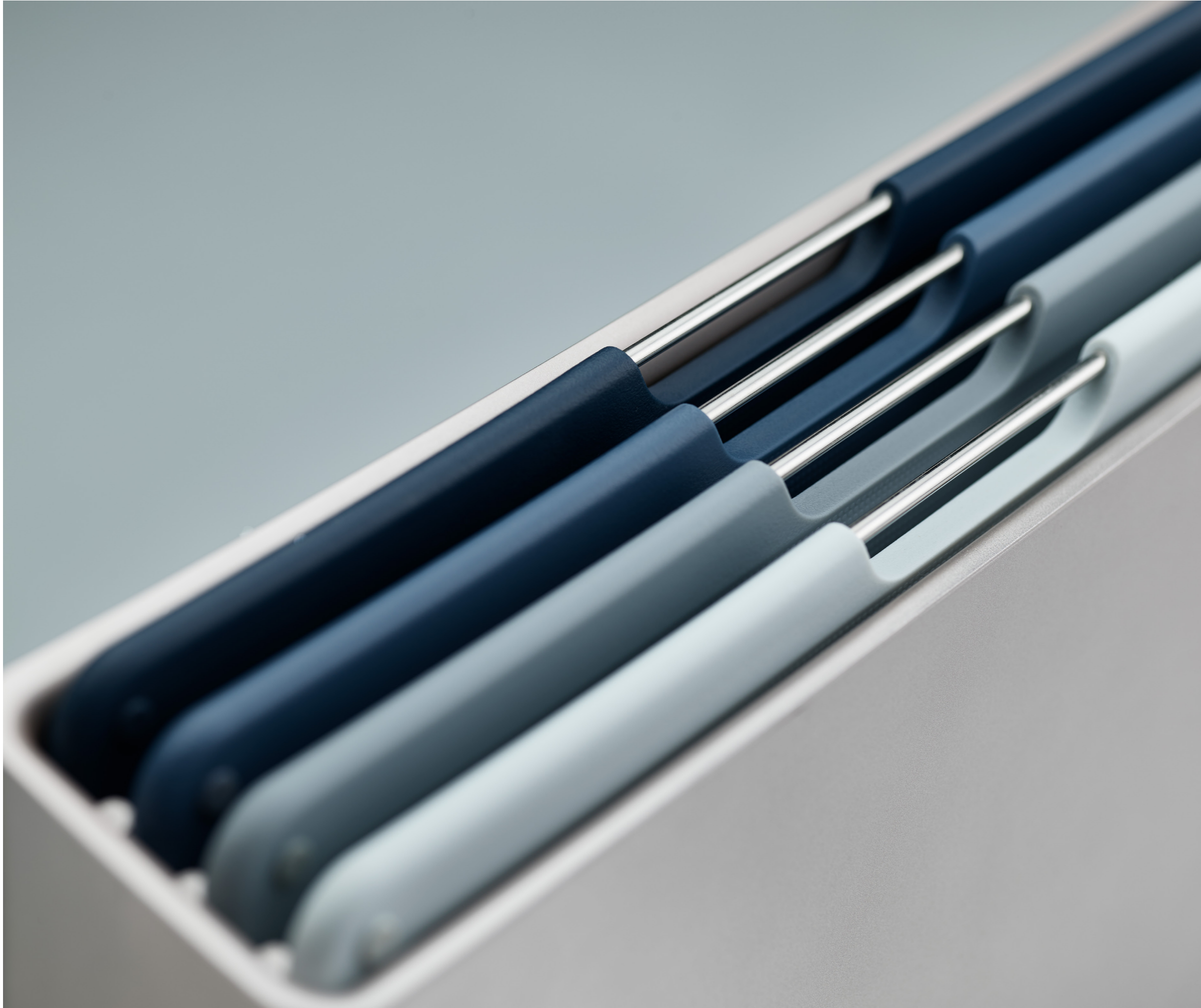


Joseph<sup>®</sup>  
Joseph

Editions | Sky  
Autumn 2020





## C O N T E N T S

5	<b>Introduction</b>
6	<b>Cleaning &amp; Organisation</b>
7	Extend™
8	Caddy™
	Presto™
9	Wash&Drain™
11	DrawerStore™
12	<b>Intelligent Waste</b>
	Totem Max
15	Stack 4
18	<b>Cookshop</b>
	Folio™
21	Spiro™
	Milltop™
22	Nest™ 9 Plus
	Elevate™
	Index™
25	Podium™
	Nest™ Utensils Plus
	Nest™ Lock
26	<b>Packaging, POS &amp; Merchandisers</b>

# Joseph<sup>®</sup> Joseph

E D I T I O N S

Combining innovative design with distinctive colour has always been an essential part of what makes a Joseph Joseph product special.

This passion for blending perfect function with beautiful style has led us to create Editions – a collection of our bestselling products in the season's most sought after colour palette.

Taking inspiration from the myriad of hues found in the ever-changing skyscape above our heads, Editions Sky blends calming tones of dusty blue, azure and cumulus grey to create a stylish collection that brings serenity and relaxation into the home.

Now encompassing cleaning and organisation products, as well as waste management and kitchenware, the range provides a host of perfect gift ideas and brings a distinctive touch of colour to the kitchen.



# Cleaning & Organisation



NEW

## Extend™ Expandable dishrack with draining plug

Design by Studio17  
Design registered

This versatile dishrack allows you to quickly and easily expand your draining space. When required it can be extended to almost twice its size to accommodate the washing up after either single- or family-sized meals.

An integrated spout helps to drain away any excess water, but this can be rotated away and closed trapping water inside for draining later. This means that Extend™ can also be used to create draining space almost anywhere. With plated steel prongs and non-scratch tips that make it suitable for all types of glassware and crockery, this versatile drainer can be extended to create additional draining space that's perfect for cups and bowls.

A moveable cutlery drainer allows for flexible use and non-slip feet to ensure that, wherever it's used, the unit will be secure and stable. The steel rack can be removed for easy cleaning.

Wash and dry by hand.



Extend  
(85185) Sky™

### Dimensions

Closed D32 x W36.4 x H16.1 cm (D12½ x W14¼ x H6¼ inches)

Extended D52.7 x W36.4 x H16.1 cm (D20¾ x W14¼ x H6¼ inches)



Wash&Drain™  
(85179) Sky

**Dimensions**  
W31 x D30 x H20 cm (W12¼ x D12 x H8 inches)



**Wash&Drain™**  
Dishwashing bowl with straining plug

Design by Morph  
Design registered

This basic piece of kitchen equipment is given a stylish and practical update with this smart, thoughtful design. It has an integrated plug which means water can be quickly drained away, eliminating the problem of lifting and emptying a heavy bowl. The plug can also be set to strain the water for food particles, allowing them to be easily disposed of and helping to prevent sink blockages.

Wash and dry by hand.



**Presto™**  
Hygienic soap dispenser

Design registered

This hygienic soap dispenser features an extra-large, stainless-steel pump head which makes it easy to operate with the wrist or forearm when your hands are messy. This ingenious design prevents the top from becoming contaminated, particularly important when washing hands after preparing raw meat or fish. A transparent window in the base shows when you need to refill and the non-slip base keeps the unit in place during use.

Wash and dry by hand.



Presto™  
(85184) Sky

**Dimensions**  
H14.6 x W7.3 x D7.3 cm (H5¾ x WD2¾ x D2¾ inches)



Easy to operate with wrist or forearm



**Caddy™**  
Sink tidy

Design by Studio17 Design  
Design registered

The sink has never been so organised, with this highly practical design. The main body of the unit provides ample space for storing a washing-up liquid bottle and brush, and the integrated rail provides hanging and drying space for damp dishcloths. A large draining plate within the base creates a dedicated area for placing wet sponges, and the concealed reservoir beneath the unit collects any drained water ready for disposal. The entire unit can be dismantled for easy cleaning.

Wash and dry by hand.



Caddy™  
(85180) Sky

**Dimensions**  
W21 x H13 x D11.5 cm (W8¼ x H5 x D4½ inches)





DrawerStore™  
Cutlery Organiser  
**(85181)** Sky

**Dimensions**  
D39.5 x W11 x H5.7 cm  
(D15.5 x W4.3 x H2.2 inches)

NEW

### DrawerStore™ Compact cutlery organiser

Design registered

This revolutionary design is such a simple idea, it leaves you wondering why it hasn't been thought of sooner. By angling and layering each compartment on top of each other, it enables you to store a full cutlery set in less than half the space of a conventional cutlery tray. Items can be placed inside either head or handle first, but the design also features handy icons for easy identification. Non-slip feet on the base stop the unit from sliding around in your drawer.

Wash and dry by hand.

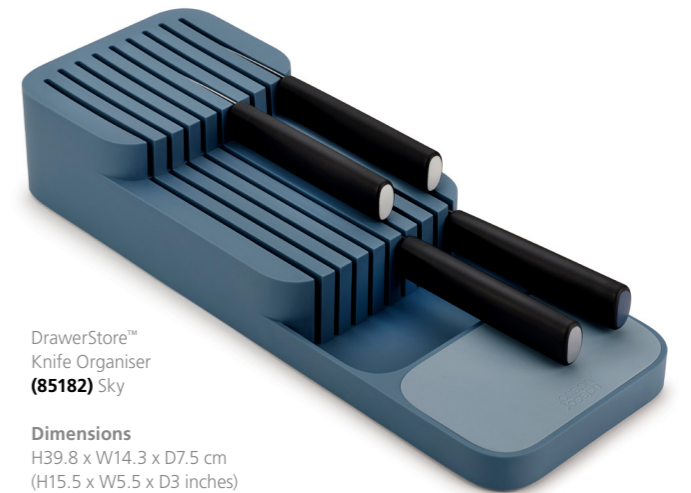
NEW

### DrawerStore™ Compact 2-tier knife organiser

Design registered

Storing sharp knives loosely in drawers can be dangerous and may also damage expensive blades. This 2-tier knife organiser is the perfect solution providing both safe storage and easy access for a range of kitchen knives. It features two levels for different blade lengths and can hold up to nine knives in a neat, compact space. Non-slip feet on the base stop the unit from sliding around in your drawer.

Wash and dry by hand.



DrawerStore™  
Knife Organiser  
**(85182)** Sky

**Dimensions**  
H39.8 x W14.3 x D7.5 cm  
(H15.5 x W5.5 x D3 inches)

NEW

### DrawerStore™ Cutlery, utensil and gadget organiser

Design registered

Organise messy utensil drawers with this practical storage solution. This unique tray combines five overlapping compartments for storing cutlery with three deep-sided compartments for holding utensils and gadgets. What's usually stored in two drawers can now be neatly organised into one, creating more space in your kitchen.

Wash and dry by hand.



DrawerStore™  
Cutlery, Utensil  
& Gadget Organiser  
**(85183)** Sky

**Dimensions**  
D39.5 x W11 x H5.7 cm  
(D15½ x W4¼ x H2¼ inches)

# Waste & Recycling

## Totem Max Waste & Recycling Unit

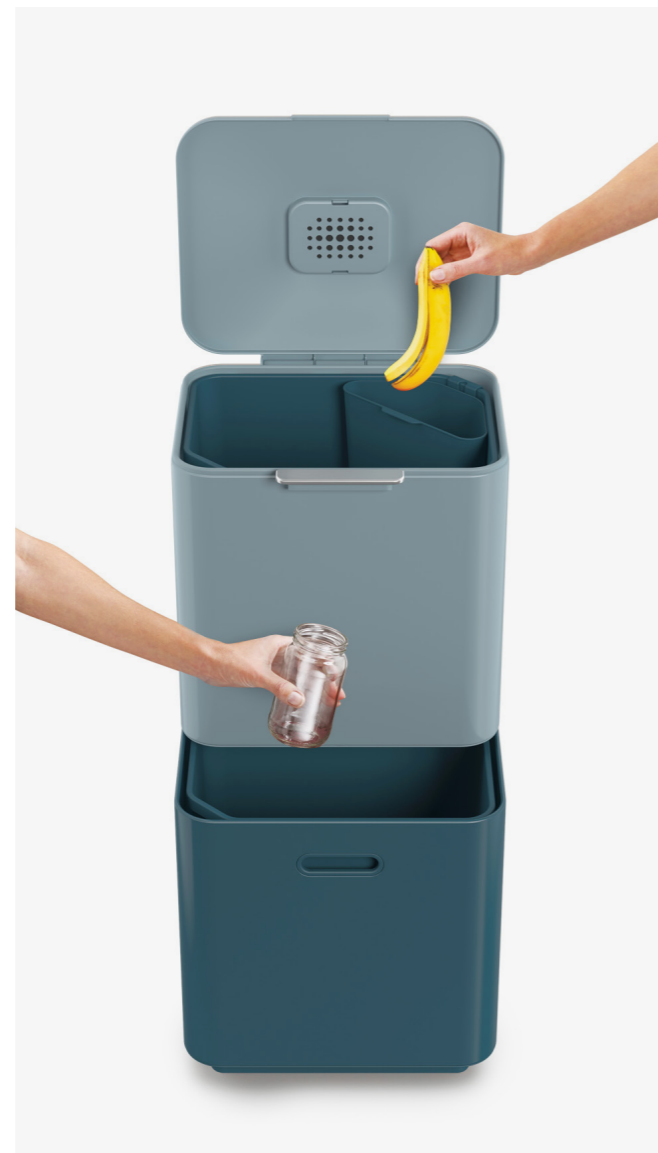
Design by PearsonLloyd  
Design registered

Totem is an award-winning design that combines all your waste and recycling in one compact unit. It features two compartments arranged vertically, which saves space and makes them very easy to fill and empty. Each compartment has a removable bucket that can be fitted with a single standard liner for general waste or two smaller bags, using the integrated bag hooks, for separating different types of recycling. Breather vents in the bucket sides make removing a full liner easier.

Totem also features a ventilated odour filter in the main lid that helps reduce moisture and odour build up from waste. The design comes with a 3-litre (0.8 US Gallon) removable food waste caddy that can be stored in either compartment, or on the worktop.

Custom-fit liners for the main compartments and compostable liners for the food waste caddy are available separately, as are replaceable odour filters.

10-year guarantee. External surfaces: Wipe clean with a damp cloth and then dry with a soft, dry cloth.



Compartments for separating waste & recycling





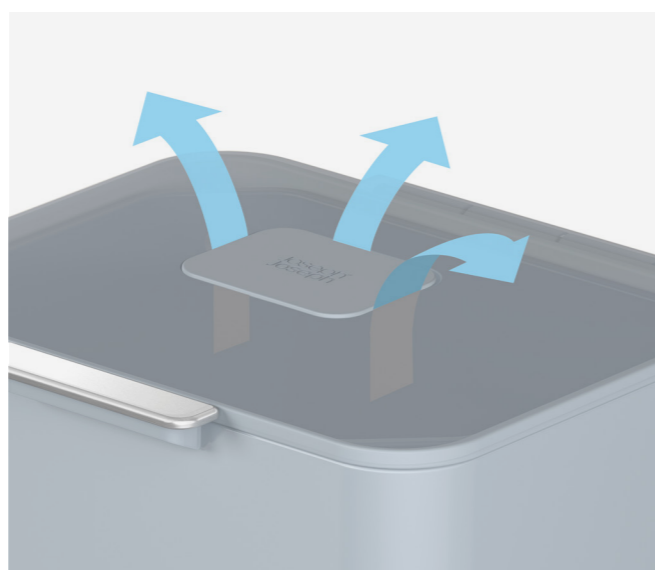
Removable bucket with liner retaining holes and carrier bag hooks



3-litre removable food waste caddy with lid



Top and bottom buckets are interchangeable and feature angled corners to allow easy removal.

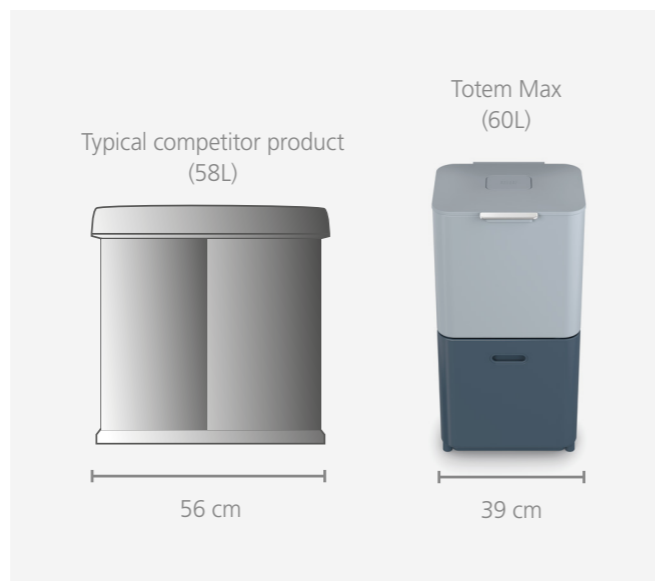


Integrated odour control using a replaceable activated carbon filter



Totem Max (60L) (30093) Sky

**Dimensions**  
H81.4 x W39 x D36.6 cm (H32 x W15¼ x D14½ inches)



Unique vertical design maximises capacity in a compact space

NEW

### Stack 4 Food waste caddy with odour filter

Design by PearsonLloyd  
Design registered

This clever caddy has been carefully designed to help reduce the smell from collected food waste. It has a unique, ventilated design that allows air to enter and circulate inside the caddy, which helps to reduce moisture - the main cause of unpleasant odours from decomposing food.

In addition, it features a replaceable odour filter in the lid that works in tandem with the fresh air to help trap any smells that do occur. It has an easy-clean polypropylene body, a flip-top lid and a sturdy stainless-steel carry handle. A liner-retaining hole inside ensures any liners stay in place

and the rim of the removable lid hides any untidy bag overhang. Perfect for storing on a kitchen worktop. Custom-fit, compostable liners (IW2) are available separately for the perfect fit.

Total capacity: 4L (1 US Gallon).  
Wash by hand with hot, soapy water.



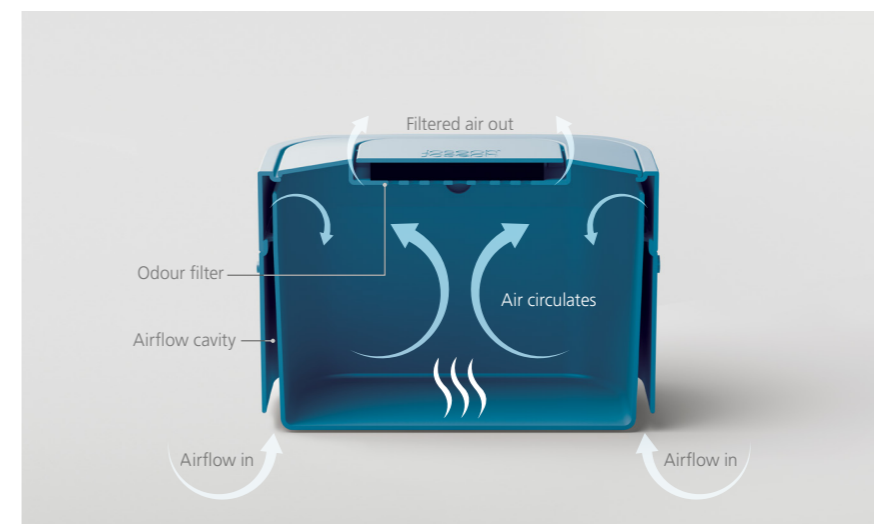
Store on the worktop



Replaceable odour filter



Custom-fit liner ensure perfect fit.



Ventilated design reduces moisture and odours



Stack 4 (30108) Sky

**Dimensions**  
H23 x W20 x D16 cm (H9 x W7¾ x D6¼ inches)





# Food Preparation



NEW

## Folio™ Large

Set of 4 colour-coded chopping boards with storage case

Design registered

This stunning design features a slimline, case that keeps four large chopping boards beautifully organised and makes a real statement on the worktop. Each colour-coded board has a knife-friendly, textured cutting surface on both sides and non-slip feet. They can be easily removed from the case due to the smart angled design and stainless-steel selecting bars. The case holds each board neatly apart, allowing air to circulate, and features non-slip feet on the base.

Boards - Dishwasher safe.  
Case - Wipe clean with a soft, damp cloth.



Colour-coded chopping boards with non-slip feet



Stainless-steel selecting bars allows easy removal from case.

### Dimensions

Case: H26.2 x W35.7 x D7.6 cm (H10¼ x W14 x D3 Inches)  
Boards: W24 x L34 x D8 cm (W9½ x L13¼ x D3.14 inches)



Folio™ Large  
(60193) Sky





NEW

### Spiro™ 3-in-1 hand-held spiralizer

Design registered

Many spiralizers can be fiddly to use and they often create piles of messy noodles. Spiro™, however, makes spiralizing super neat and easy with its clever, compact design. It comes with two styles of spiralizing blade - coarse and fine - for different noodle thicknesses, plus a handy grating blade. It features a soft-grip lid, for easy turning, and two guide arms that help keep food straight as you twist.

Most importantly, it has a clear base that collects food as you cut - keeping everything nicely contained and your worktop cleaner. After use, the three blades and the lid store neatly together with the base for compact storage.

Dishwasher safe.



Coarse blade

Fine blade

Grating blade



Spiro™  
(20158) Sky

Dimensions D7.8 x W7.8 x H16 cm  
(D3 x W3 x H6¼ inches)

NEW

### Milltop™ Non-spill salt & pepper mill set

Design registered

Conventional salt & pepper mills often create mess by leaving excess grounds on surfaces when placed down. The simple, elegant design of Milltop™ avoids this problem as the grinding mechanism is at the top of the mill, which means any excess grounds fall back inside the unit after use. The innovative design also does away with a long central spindle for the grinding mechanism, which increases its capacity and makes it much easier to fill. To use, simply invert the mill and twist the base to grind. To adjust the grinding size, simply rotate the stainless-steel top.

Wipe clean with a damp cloth



Milltop™  
(20157) Sky

Dimensions H16.9 x W7 x D7 cm (H6½ x W2¾ x D2¾ inches)



Anti-spill design





Nest™ 9 Plus  
(40101) Sky

**Dimensions**  
H24 x W19 x D8 cm (H9½ x W7½ x D3 inches)



### Nest™ 9 Plus

Compact food preparation set

Design by Morph Design registered

Nest™ is the ultimate collection of practical, space-saving kitchenware comprising a unique range of food preparation sets. Their innovative design allows the individual elements within each set to be stacked together, thereby occupying the absolute minimum amount of space, wherever they are stored. Set includes: 5 measuring cups, 0.5 L mixing bowl, sieve, colander, 4.5 L mixing bowl. Wash and dry by hand. Not microwave safe. BPA Free

### Elevate™ Nylon Carousel

Kitchen tool set with storage stand

Concept by Gillian Westley  
Design by Derek Roberts

The Elevate™ range of kitchen tools has been specifically designed to improve hygiene and minimise the mess made by placing utensils onto kitchen surfaces during use. Each tool has an innovative, weighted handle with an integrated tool rest, ensuring that when an Elevate™ utensil is placed down, its head is always raised from the work surface.

Tools - dishwasher safe. Stand - wipe clean with a damp cloth.



Ladle  
Slotted Turner  
Solid Spoon  
Slotted Spoon  
Spaghetti Server  
Flexible Turner



Elevate™ Nylon  
Carousel  
(10525) Sky

**Dimensions**  
H34 x W23 x D23 cm (H13½ x W9 x D9 inches)



Index™  
(85179) Sky

**Dimensions**  
Case H34.6 x W27.3 x D8.3 cm (H13½ x W10¾ x D3¼ inches)  
Boards H34 x W24 cm (H13¼ x W9¾ inches)

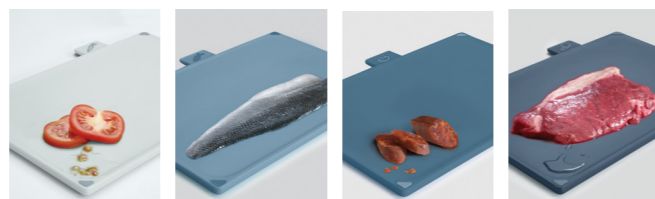
### Index™

Food-specific chopping board sets

Design by Damian Evans  
Design registered

Since its launch in 2008, Index™ has been a worldwide bestseller, helping reduce cross-contamination of food with a simple-yet-effective, colour-coded system of boards.

Chopping boards - Dishwasher safe.  
Storage case - wipe clean with a damp cloth





Podium™  
(81106) Sky

**Dimensions**  
H32.2 x W31.2 x D10.4 cm  
(H12½ x W12¼ x D4¼ inches)



**Podium™**  
Storage container sets  
with easy-access stand

Design Registered

This smart storage container set features a clever storage stand that allows easy access to any jar, regardless of its position. Each container features a lid with an airtight silicone seal, easy-pour corners and a base that locates securely onto the stand. The stand has a slender design that supports each container individually and includes non-slip feet on its base. Containers & lids - hand wash only. Stand - wipe clean.

Set includes five containers:  
1 x 1.9 L, 1 x 1.3 L, 2 x 900 ml, 1 x 500 ml.

**Nest™ Utensils Plus**  
Compact kitchen tool set  
with magnetic storage stand

Design by Studio17 Design  
Design registered

Nest™ is the ultimate collection of practical, space-saving kitchenware comprising a unique range of food preparation sets. Their innovative design allows the individual elements within each set to be stacked together, thereby occupying the absolute minimum amount of space, wherever they are stored.

Set includes: ladle, solid spoon, slotted spoon, spaghetti server, slotted spatula.

Tools - Dishwasher safe. Stand - wipe clean with a damp cloth.



Nest™ Utensils Plus  
(10526) Sky

**Dimensions**  
H33 x W11 x D11 cm (H13 x W4¼ x D4 inches)



Nest™ Lock  
(81105) Sky  
(81108) Sky USA only

**Dimensions**  
H16.9x W24.5 x D20 cm (H6½ x W9½ x D7¾ inches)

**Nest™ Lock**  
Compact storage containers

Design by Morph  
Design registered

The problem with most storage containers is that they take up precious cupboard space when not in use and usually require the lids and bases to be stored separately - which makes finding and pairing both elements a hassle. With the unique design of Nest™ Lock, container bases nest neatly inside each other and lids clip conveniently together for efficient, space-saving storage. As each element is colour-coded too, it's very easy to match lids with bases when you need them. Bases and lids - Freezer, microwave and dishwasher safe (top rack only). BPA-free.

Set includes five containers:  
1 x 230 ml, 1 x 540 ml, 1 x 1.1 L, 1 x 1.3 L, 1 x 1.85 L.



230ml (8oz)    540ml (18oz)    1.1L (37oz)    1.3L (63oz)    1.85L (101oz)

# Packaging, POS & Merchandisers



Strutcard  
(991008)

Dimensions  
H25x W14.8 x D6.3 cm (H10 x W5¾ x D2½ inches)



Cardboard FSDU  
(991007)

Dimensions  
H150 x W80 x D40 cm (H59 x 31½ x 15¾ inches)

## Contact us

### UK

**Trade customer enquiries and ordering**  
sales@josephjoseph.com

**General account enquiries**  
accounts@josephjoseph.com

**General enquiries**  
info@josephjoseph.com

**Press enquiries**  
pr@josephjoseph.com

Joseph Joseph Ltd.  
100 Union Street  
London, SE1 0HS  
United Kingdom

Tel: +44 (0)20 7261 1800  
info@josephjoseph.com

[josephjoseph.com](http://josephjoseph.com)

### USA

**Trade customer ordering and press enquiries**

customer@josephjoseph.com

Joseph Joseph Inc.  
41 Madison Avenue,  
15th Floor  
New York  
NY 10010

Tel: +1 917 338 0900  
Fax: +1 917 338 0912  
customer@josephjoseph.com

[josephjoseph.com](http://josephjoseph.com)

All product images and specifications are based upon current information. Joseph Joseph reserves the right to make changes from time to time, without notice or obligation, to specifications, colours or materials and to change or discontinue models. Some products or features may not be available in all markets.

Photography by Charlie Bettinson and Steve Wakeham.

Joseph Joseph Ltd.  
100 Union Street  
London SE1 0NL  
info@josephjoseph.com

Joseph Joseph Inc.  
41 Madison Avenue  
15th Floor  
New York NY10010  
customercare@josephjoseph.com

Joseph Joseph SARL  
111, avenue Victor Hugo  
75116 Paris  
renseignements@josephjoseph.com

Joseph Joseph  
Deutschland GmbH  
Königsallee 92a – 4.Stock  
40212 Düsseldorf  
information@josephjoseph.com

Joseph Joseph 株式会社  
Tel. 0570-031-117  
カスタマーサービス受付時間:  
10:00-12:00 / 13:00-18:00  
(土・日・祝日・休業日を除く)

Joseph Joseph (Shanghai) Trading Ltd.  
杰膳 (上海) 贸易有限公司 上海浦东栖霞路  
16弄3号楼11层133室  
saleschina@josephjoseph.com

[josephjoseph.com](http://josephjoseph.com)

